

Height of a Zero Gravity Parabolic Flight

Math 1010 Intermediate Algebra Group Project

Your Name: Ana Hoerner

Have you ever wondered what it might feel like to float weightless in space? One way to try it out is to fly on a special aircraft that astronauts use to train for their trips to space. Both NASA and the Russian Space Agency have been flying these for years. The way this is accomplished is to fly to a high altitude, drop down to gain speed, and then start a large parabolic path up in the sky. For a time ranging from 10 to 20 seconds, along the top part of the parabolic flight, an environment simulating zero gravity is created within the plane. This effect can cause some nausea in the participants, giving rise to the name "Vomit Comet", the plane used by NASA for zero-G parabolic training flights. Currently there is a private company that will sell you a zero-G ride, though it is a bit expensive, around \$5000.



This lab will have you take a look at the parabolic path to try to determine the maximum altitude the plane reaches. First, you will work with data given about the parabola to come up with a quadratic model for the flight. Then you will work to find the maximum value of the model. Now for the data:

Height of a Zero-G Flight t Seconds After Starting a Parabolic Flight Path

Time t in seconds	2	10	20
Height h in feet	30,506	31,250	29,300

To find the quadratic model, you will be plugging the data into the model $h = at^2 + bt + c$. The data points given are just like x and y values, where the x value is the time t in seconds and the y value is the altitude h in feet. Plug these into the model and you will get equations with a , b and c .

Part 1: Write your 3 by 3 system of equations for a , b , and c .

$$\begin{aligned}h &= a(2)^2 + b(2) + c = 30506 \rightarrow 4a + 2b + c = 30506 \\h &= a(10)^2 + b(10) + c = 31250 \rightarrow 100a + 10b + c = 31250 \\h &= a(20)^2 + b(20) + c = 29300 \rightarrow 400a + 20b + c = 29300\end{aligned}$$

Part 2: Solve this system. Make sure to show your work.

$$\begin{bmatrix} 4 & 2 & 1 & 30506 \\ 100 & 10 & 1 & 31250 \\ 400 & 20 & 1 & 29300 \end{bmatrix} \begin{array}{l} (-25)R_1 + R_2 \rightarrow R_2 \\ (-100)R_1 + R_3 \rightarrow R_3 \end{array} \quad \begin{bmatrix} 4 & 2 & 1 & 30506 \\ 0 & -40 & -24 & -731400 \\ 0 & -180 & -99 & -3021300 \end{bmatrix} \begin{array}{l} (-8)R_2 \rightarrow R_2 \\ (-9)R_3 \rightarrow R_3 \end{array} \quad \begin{bmatrix} 4 & 2 & 1 & 30506 \\ 0 & 5 & 3 & 91425 \\ 0 & 20 & 11 & 339700 \end{bmatrix} \begin{array}{l} (4)R_2 + R_3 \rightarrow R_3 \end{array}$$

$$\begin{bmatrix} 4 & 2 & 1 & 30506 \\ 0 & 5 & 3 & 91425 \\ 0 & 0 & -1 & -30000 \end{bmatrix} \begin{array}{l} R_3 + R_1 \rightarrow R_1 \\ 3R_2 + R_3 \rightarrow R_2 \\ (-1)R_3 \rightarrow R_3 \end{array} \quad \begin{bmatrix} 4 & 2 & 0 & 506 \\ 0 & 5 & 0 & 1425 \\ 0 & 0 & 1 & 30000 \end{bmatrix} \begin{array}{l} \frac{1}{2}R_1 \rightarrow R_1 \\ \frac{1}{5}R_2 \rightarrow R_2 \end{array} \quad \begin{bmatrix} 2 & 1 & 0 & 253 \\ 0 & 1 & 0 & 285 \\ 0 & 0 & 1 & 30000 \end{bmatrix} \begin{array}{l} R_1 - R_2 \rightarrow R_1 \end{array}$$

$$\begin{bmatrix} 2 & 0 & 0 & -32 \\ 0 & 1 & 0 & 285 \\ 0 & 0 & 1 & 30000 \end{bmatrix} \begin{array}{l} \frac{1}{2}R_1 \rightarrow R_1 \end{array} \quad \begin{bmatrix} 1 & 0 & 0 & -16 \\ 0 & 1 & 0 & 285 \\ 0 & 0 & 1 & 30000 \end{bmatrix} \rightarrow \boxed{a = -16 \quad b = 285 \quad c = 30,000}$$

check:

$$h(2) = -16(2)^2 + 285(2) + 30000 \rightarrow 30506 \checkmark$$

$$h(10) = -16(10)^2 + 285(10) + 30000 \rightarrow 31250 \checkmark$$

$$h(20) = -16(20)^2 + 285(20) + 30000 \rightarrow 29300 \checkmark$$

Part 3: Using your solutions to the system from part 2 to form your quadratic model of the data.

$$\boxed{h = -16t^2 + 285t + 30000}$$

Part 4: Find the maximum value of the quadratic function. Make sure to show your work.

$$\text{Vertex: } \left(\frac{-b}{2a}, f\left(\frac{-b}{2a}\right) \right) \rightarrow (8.9, 31269.1)$$

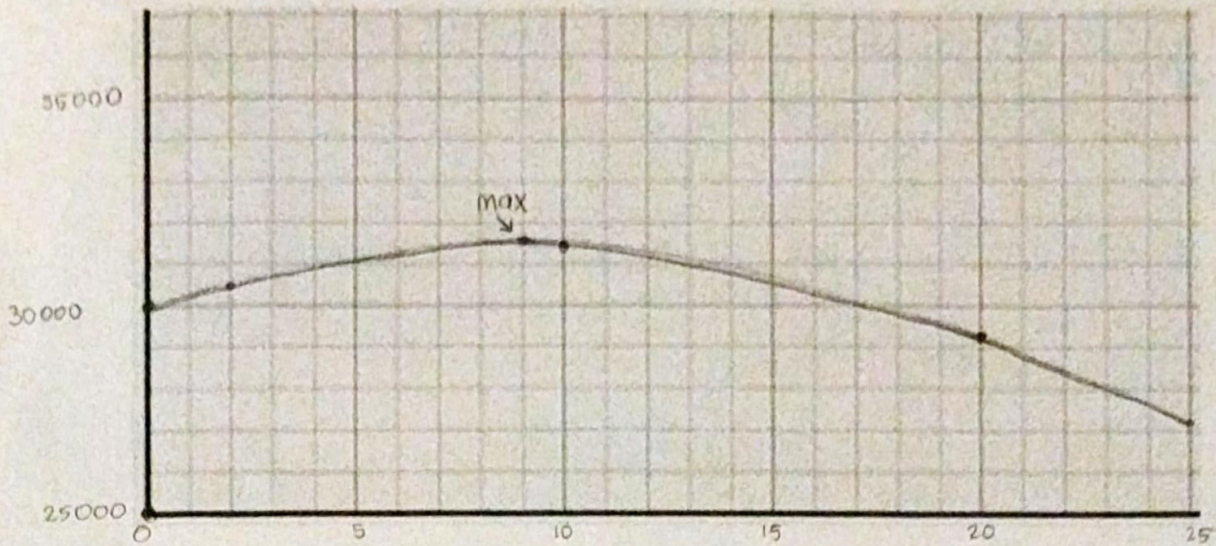
$$t: \frac{-(285)}{2(-16)} \rightarrow \frac{285}{32} \text{ or } \approx 8.9$$

$$h: -16\left(\frac{285}{32}\right)^2 + 285\left(\frac{285}{32}\right) + 30000 \rightarrow \approx 31269.1$$

$$\boxed{\text{max } \approx 31269.1}$$

Area H.

part 5: Sketch the parabola. Label the given data plus the maximum point. A good way to start labeling your axes is to have the lower left point be (0, 25000)



Part 6: Reflective Writing.

Did this project change the way you think about how math can be applied to the real world? Write one paragraph stating what ideas changed and why. If this project did not change the way you think, write how this project gave further evidence to support your existing opinion about applying math. Be specific.

This problem is similar to many from the homework. This problem, then, only served as further evidence, or practice, for one way to apply quadratic formulas. I enjoy word problems like this, if they can be relevant.